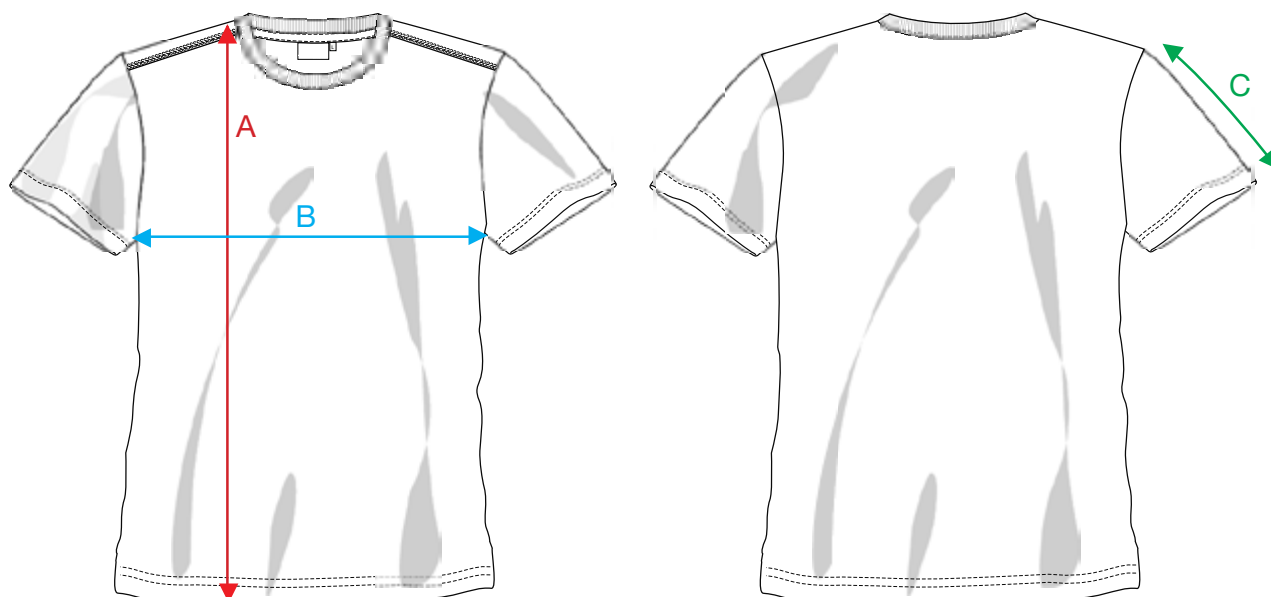


MEASUREMENT SHEET/SIZE SPEC

029037 BASIC ACTIVE-T JUNIOR



FRONT

BACK

MEASUREMENT IN CM	110/120	130/140	150/160
A - BODYLENGTH FRONT HPS	47	53	59
B - 1/2 CHEST	35	39	44
C - SLEEVELENGTH	15	16,50	18

Sizing chart is in centimeters and sizing is subject to a market accepted tolerance. No rights may be derived from this sizing chart.

